

READ INSTRUCTIONS COMPLETELY BEFORE INSTALLATION (REV 01/22)

STEP 1 SURFACE PREPARATION:

- If applicable, trim, sand, or cut the sump top to make a *flat* bonding surface. There should not be any more than a 1/4" variance of space in the fit that is required for the Frame or Frame w/ Adaptor Ring Assembly. The bonder can fill in and make up for some minor variance.
- Sand the bonding surface areas with 40-grit sandpaper sufficiently to remove the surface skin and rough it where the bonder will be applied. Remove any steel, plastic, or rubber parts from previous lid mount that would be in the way of a flush fit of the EasyFit Lid frame.
- Thoroughly clean the surfaces with Acetone after.

Note: Approximately 6" of space from the top of the sump to the bottom of the manhole cover is required for installation.

STEP 2 FIRST APPLICATION OF BONDER:

- Apply a liberal bead of the appropriate bonding agent to the top surface of the sump top. Ensure that the entire rim or surface is sufficiently covered with the bonding agent.
- Use the bonder and overall volume specific to the sump type:

Icon PolyFuse Bonder for HDPE Plastic Sumps
 Icon iBond Bonder for FRP, Steel, & Concrete Sumps

STEP 3 INSTALL FRAME OR FRAME w/ ADAPTOR RING:

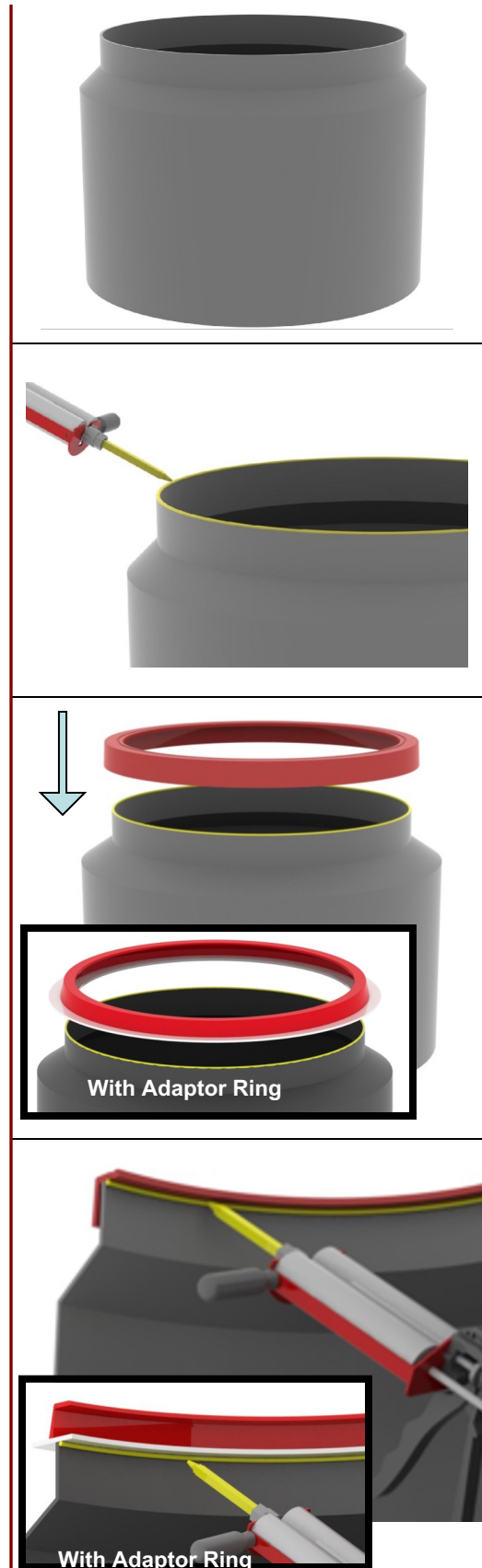
- Install an appropriately sized EasyFit frame or frame w/ adaptor ring assembly onto the sump top, making sure that it is positioned and fitted properly.
- The weight of the frame will be sufficient to hold in place if the fit is right. Be careful not to bump/move it between the bonder set and cure time period. If you need to weight it slightly, don't use anything over 10lbs.

STEP 4 SECOND APPLICATION OF BONDER:

- If applicable, from the inside of the sump, apply another heavy bead of the bonding agent to the inside seam of the EasyFit frame or frame w/ adaptor ring assembly and the top of the sump. There is no need to wait for a complete cure of the bonder in Step 3 before doing Step 4.
- If done properly, this step will ensure that a sufficient volume of bonding agent is applied over a larger surface area for a strong structural bond and watertight seal.

Note: Cure time for bonding agents can vary depending on temperature, but total cure time for each is estimated as follows:

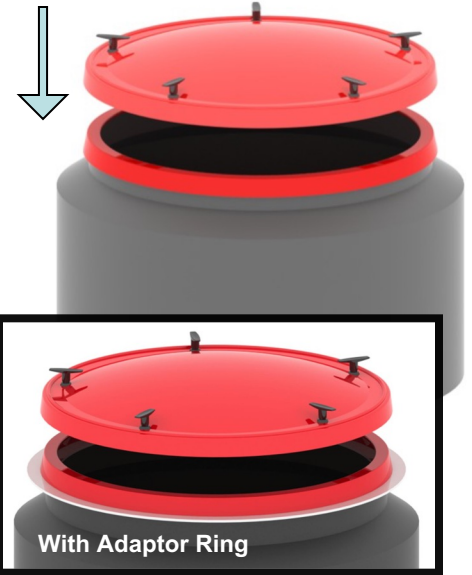
Icon PolyFuse Bonder - 5-Min Set/12-Hr Cure
 Icon iBond Bonder - 3-Min Set/45-Minute Cure



READ INSTRUCTIONS COMPLETELY BEFORE INSTALLATION (REV 01/22)

STEP 5**LID PLACEMENT:**

- A. Even before totally cured, you may set the lid in place, but **BE CAREFUL** not to move the bonded frame or frame w/ adaptor ring assembly in the process. Don't worry about setting/turning the cam locks at this point.
- B. **After totally cured**, fully install the lid onto the frame or frame w/ adaptor ring assembly by pressing down on the lid near each of the cam-lock handles as you turn the cam lock clockwise $\frac{1}{2}$ turn to seal the lid onto the frame.
- C. Removing the lid is as simple as reversing the turn of the cam-lock handles, and while gripping the handles opposite of each other, lift the lid straight up and off of the sump. Weight of the lid is approximately 10 lbs.

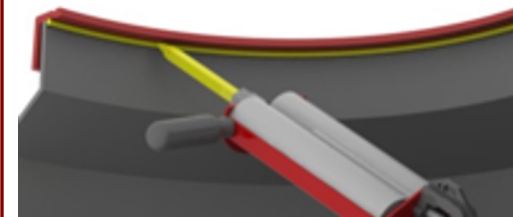
**STEP 6****TESTING:**

- A. When the bonder is completely cured, the installation is ready for for watertightness testing.
- B. Make sure the lid is correctly seated to the frame and the cam-lock handles are completely turned into place to seal the lid to the frame.
- C. Pour 5 gallons or more of water over the top of the assembly until satisfied that sufficient volume has been used to test the watertightness.
- D. Wait 30-minutes and observe water drainage. Watch for any bubbles around the assembly that might identify an area of leak. Afterwards, remove any remaining water over the top of the sump and remove the lid to inspect for any water leakage from the lid connections (bonded seam and lid connection to frame).

**FINAL****ADJUSTMENTS:**

If it is determined that any of the connections are insufficiently sealed, you can:

- A. Add additional bonder material to the inside seam of the frame or adaptor ring and sump top connection; and/or
- B. Adjust the cam-lock connection of the lid to the frame by adjusting the lock nuts on the cam-lock arm.



CONTACT ICON TECHNICAL SUPPORT FOR ANY QUESTIONS
 855.DRY.SUMP (379.7867) techsupport@icontainment.com