

Read Instructions Completely Before Installing REV 02/21

Background

OPW manufactured the CS series fittings with a hard black plastic housing compressed to the sump wall with a threaded nut and rubber gasket ring on the inside or outside of the sump. A rubber conical shaped boot was clamped to the smooth housing cuff, reducing to the pipe. The larger sizes allowed convenience pipe or "ducting" to enter the sump, and smaller sizes were for direct bury pipe and conduit applications. This repair assumes that the housing is found in good condition and can be resealed. The rubber boot will require replacement as part of a repair. This instruction is for the CS400 series design when re-piping through the convenience pipe/ducting.

Tools, Parts & Materials

The following tools, parts, and materials are needed for this repair:

- * 5/16" Hand Driver Tool for Band Clamps
- * Rubber Cutting Tool for Old Fitting
- * Duct Cutting Tool
- * Acetone or Isopropyl Alcohol for cleaning
- * Icon FastFuse Fitting Bonding Solvent – [IAC FastFuse](#)
- * Icon PetrolSeal Fitting Gasket Sealant – [IAC PS200](#)
- * Icon Dispensing Gun - [IAC MGun200](#)
- * Icon Split-Repair Fitting Parts (See Part Specification)
- * Icon Fitting Part "IRF OPW4.0x*" (Size determined by Pipe OD)



STEP 1 Preparation for Re-pipe & Fitting Repair

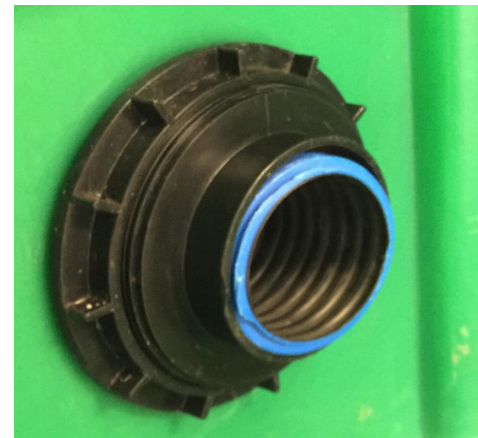
Remove the band clamps from around the rubber boot that is attached to the cuff and pipe, and completely remove the boot off of the fitting and pipe. Remove existing product pipe as part of the re-piping process.



STEP 2 Re-seal Housing & Trim Ducting

After pulling the existing product pipe out of the ducting, untighten the OPW fitting screw nut with a strap wrench, clean the area behind the nut, and dispense Icon PetrolSeal fitting gasket sealant completely around the threaded cuff where it enters the sump wall. Tighten the nut back completely.

There is no need for the ducting to be exposed inside the sump when re-piping with double wall product pipe. So before the new pipe is pulled through the ducting, cut it back to the mouth of the OPW fitting cuff with a cutting tool. Clean the cuff surface well. You are now ready to pull the new pipe through the ducting.

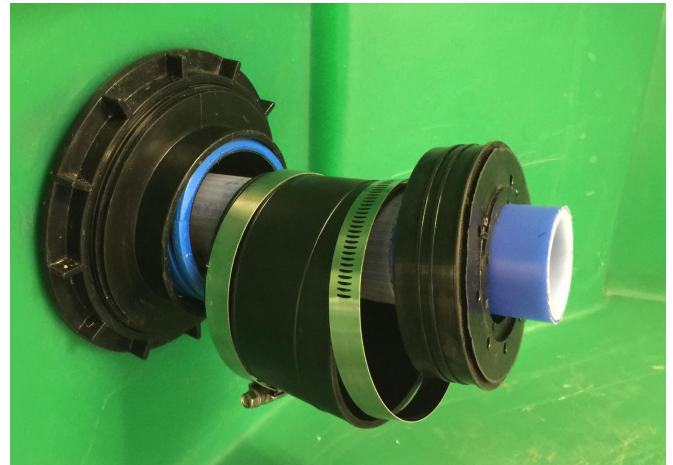


Read Instructions Completely Before Installing REV 02/21

STEP 3
Pull Pipe
& Place
Icon
Fitting
Over Pipe

Once you have pulled the new pipe through and into the sump, either before or after it is cut to length, slide the non-split Icon repair fitting parts over the end of the pipe before the end is swaged with the pipe fitting. Make sure that the parts are assembled on the pipe in the order that they will fit together with the large boot first, and the insert afterwards as shown.

* If there is an Icon Centralizer specified, then that is the first part over the pipe.

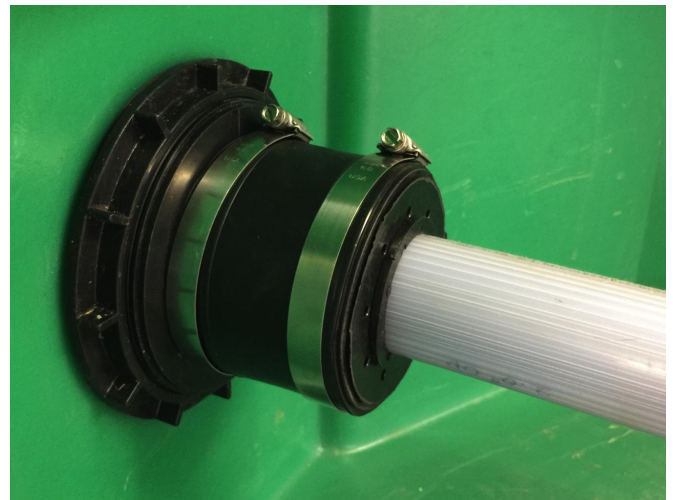


STEP 4
Connect Pipe
& Install Icon
Fitting over
OPW Housing

After the pipe end is swaged and connected to the coupling or other connector, slide the Icon repair fitting boot into place on the OPW fitting cuff. A very small amount of Icon PetrolSeal smeared on the raised lip of the cuff will help the Icon fitting boot slide over the lip easier.

* If there is an Icon Centralizer specified, push that part into the mouth of the ducting prior to installing the Icon boot over the cuff.

Afterwards, clean the outside of the Icon Insert with acetone or alcohol and apply the Icon FastFuse bonding solvent liberally to that outside surface. Immediately push into place inside the mouth of the boot.



STEP 5
Check for
Correct
Assembly
and Tighten
Band Clamps

Make sure that all parts are seated/fitted properly and then tighten the band clamps down completely (50-60 inch pounds) to assure a leak-tight compression seal for all components. There is no cure time required for the bonding solvent used with the Insert, as the compression will provide the seal. The solvent will continue to cure over 1 hour to make the Icon Boot and Insert pieces a solid, single fitting. The repair is finished and ready for hydrostatic or other testing at that point.

IMPORTANT NOTICE

Icon repair products should be installed by an Icon Certified Installer. This certification is obtained through a basic installer training offered by Icon directly via Zoom every week. Icon's product warranty is predicated upon "certified" installer installation. There is no fee, and registration for the training can be done at the following link: <http://icontainment.com/training>
 Icon repair products should be installed by an Icon Certified Installer. This certification is obtained through a basic installer training offered by Icon directly via Zoom every week. Icon's product warranty is predicated upon "certified" installer installation. There is no fee, and registration for the training can be done at the following link: <http://icontainment.com/training/>. Contact us for any questions about training or this installation.