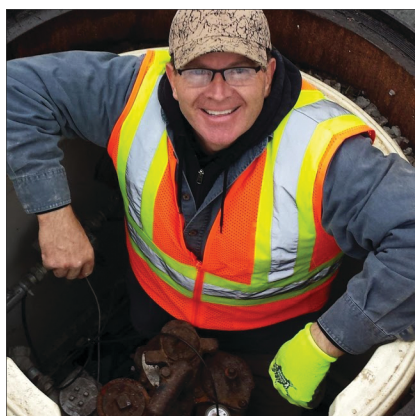


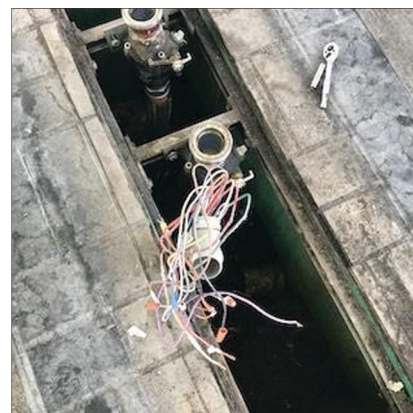
Site Survey Tips for Repair Evaluation and Parts Specification Support



We're here to help
855.DRY.SUMP (379.7867)

Icon can evaluate the repairability of any containment sump and provide you with a complete list of required repair parts and materials. Simply email us your pictures and other required information, and we'll reply timely to your request. The information will be organized in the same way that you request it. The following tips can help you help us get it complete and correct. It all starts with the initial site/sump survey, and it's important that the person doing the survey has some understanding of sump repair. Have them call us if there is any question.

ACCESS – Consider the size and type of access into the sump. The access may very well determine the type of repair (parts and materials) that is possible, and even whether the repair will be done on the inside or outside of the sump. Check the structure of the sump for any obvious damage, as that is the most critical of repair issues.

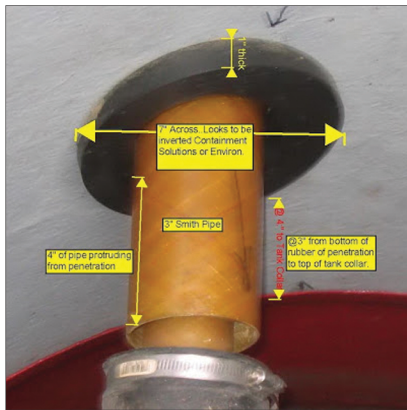


PICTURES/VIDEOS - Provide in-focus pictures with sufficiently high resolution to see details. Pictures should clearly identify all sump leak issues. Make sure you can see proximity to seams, corners, or fittings (not too close, not too far away). Also, videos are helpful for understanding active water ingress, but large file size may be a problem for email. Share pictures/videos through a web-based programs as necessary.



We have to be able to see it
to know what it is

MEASUREMENTS – The size matters for sump repair. It may be obvious from a picture what size, type, and design is involved, but “if in doubt, measure it out”. Save yourself the extra trip to get those questions answered. The OD (Outside Diameter) is the critical measurement for pipe or surfaces where a fitting would attach, but overall, measurements may be important for other leak issues as well. If measuring for lid replacement, the EasyFit Lid worksheet, available at our web page, should be used for documenting those measurements.



Examples only - not necessary to markup the pictures – measurements can be detailed in email.

ORGANIZATION – Make separate requests for multiple sites. If multiple sumps are involved, provide the pictures sump by sump, as the specification can follow that to aid in organizing the parts in the field. “Representative” pictures are risky, as pipe entry and equipment configurations can vary one sump to another, possibly requiring different solutions. Icon provides a Sump Survey Worksheet to assist in the organization of information (Copia de traducción al español disponible en el sitio).

Email to techsupport@iconcontainment.com
Visit iconcontainment.com for more info