

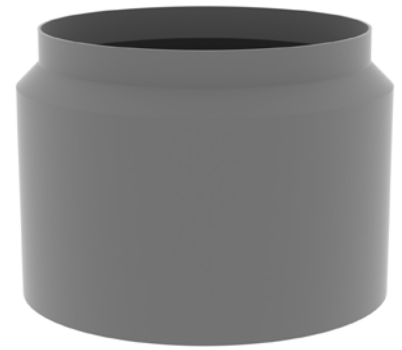
Icon Installation Instruction - EasyFit Replacement Sump Lid

READ THROUGH ENTIRE INSTRUCTION BEFORE STARTING INSTALLATION

STEP 1

If required, trim, sand, or cut the sump collar/riser top to make a *flat* and *level* surface. There shouldn't be any more than a 1/4" variance in the flush fit that is required for the Mounting Frame or Adaptor Ring Assembly. The bonder can make up for some minor variances.

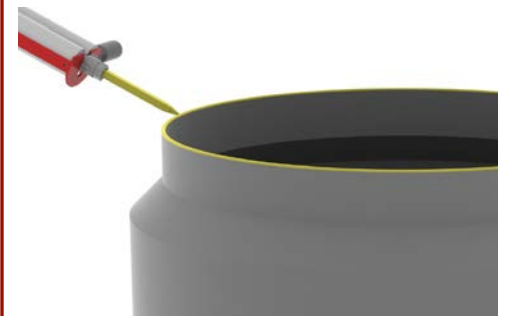
If fiberglass, remove the gel coat where the bonder will be applied. Remove any steel, plastic, or rubber parts from previous lid mount that would get in the way of a flush fit. Thoroughly clean the surfaces with Acetone.



STEP 2

Apply a liberal bead of the appropriate bonding agent to the rim of the sump collar/riser. Ensure that the entire rim is sufficiently covered with the bonding agent.

"PolyFuse" Bonder for Poly/HDPE Sumps
"FiberFuse" Bonder for Fiberglass Sumps



STEP 3

Install the fiberglass Mounting Frame or Adaptor Ring Assembly onto the sump collar/riser rim and apply weight to ensure a tight, flush seal against the rim.

*It may be helpful to have some 5 or 10 lb sandbags to use as weights to hold the frame in place as you apply the next step of bonding from the interior part of the sump. Leave the sandbags in place until the bonding is completely cured.



STEP 4

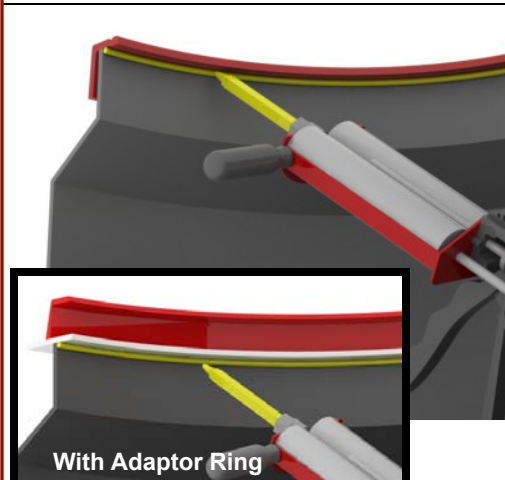
From the inside of the sump, apply another liberal bead of the bonding agent to the inside seam of the Mounting Frame or Adaptor Ring Assembly and the rim of the sump collar/riser. There is no need to wait for a complete cure of the application in Step 3 before doing Step 4. If done properly, this step will ensure that a sufficient volume of bonding agent is applied for a strong bond and watertight seal.

NOTE: Although the application is much the same, cure times for the different bonding agents vary. Total cure time for each is as follows:

PolyFuse - 12 Hrs Cure Before Testing

FiberFuse - 2 Hrs Cure Before Testing

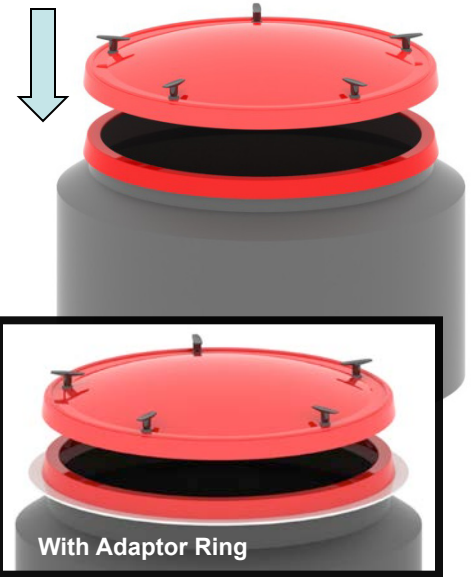
When dispensing either bonder, if the temperature is such that the bonder "runs" and doesn't stay in place in the corner well, then dispense it into a cup or other container and let sit for a minute, and then spatula into place when thickened slightly.



Icon Repair Instruction - EasyFit Replacement Sump Lid

STEP 5

After totally cured, install the EasyFit Lid straight down onto the Mounting Frame or Adaptor Ring/ Frame Assembly, as applicable to your EasyFit model.

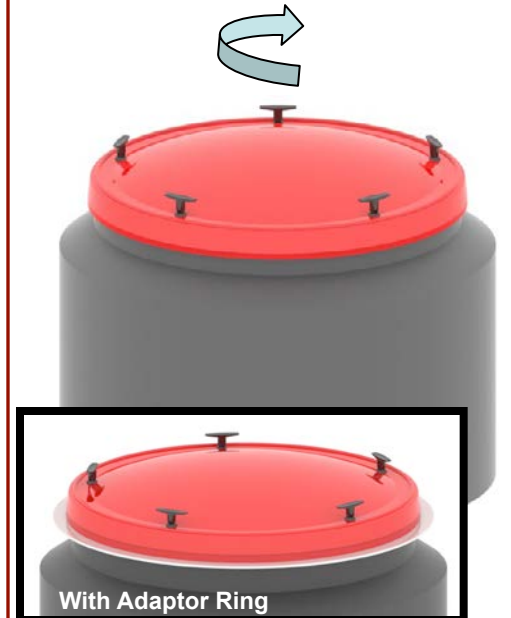


STEP 6

With slight pressure on the lid edge to compress the gasket, turn each Cam Lock Handle clockwise (1/2 turn - 180°) to seal the EasyFit Lid down on the Frame.

You are now ready for testing the watertight installation of EasyFit.

Removing the EasyFit Lid is as simple as reversing the turn of the Cam Lock Handles and while gripping the handles opposite of each other, lift the Lid straight up and off of the sump assembly. Weight of the Lid is approximately 10 lbs.



Alternate STEP 7

As an additional step for installation, if it is determined that the "rim" connection is insufficient, a 2" wide nylon mesh repair cloth may be embedded into and over-layed with additional bonder on the inside seam connection of the sump and EasyFit Mounting Frame or Adaptor Ring Assembly. You get a 1" additional overlap of each surface with material and bonder to increase the connection to the sump. This step can be followed after the other steps are completed.

