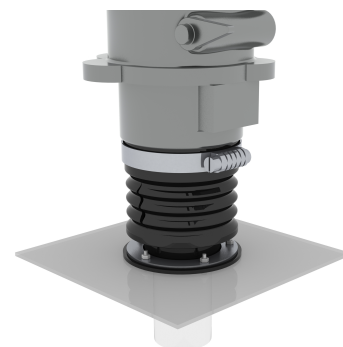


# Icon Repair Instruction for 5 & 6 Bolt Shallow Pan Fittings

## IRF “\*B\* x Spec” Repair Part Numbers

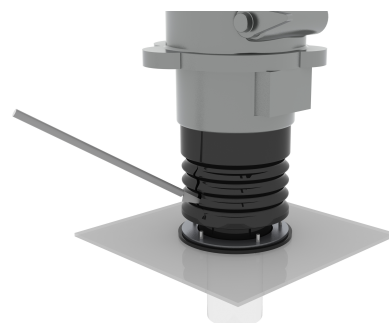
### STEP 1

Remove the band clamps and the nuts from the sump fitting to be repaired. Save the nuts so they can be reinstalled once the new boot is in place.



### STEP 2

Cut away and remove the old boot leaving the metal ring intact. Clean and clear the surface below the existing boot so that the replacement fitting can fit flush with the sump bottom. Also clean the pipe area where the replacement fitting will make contact.



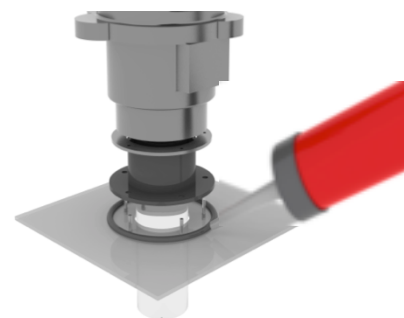
### STEP 3

Slide the metal compression ring up and place the flanged portion of the two-piece split repair boot around the pipe. Apply a liberal coating of FastFuse glue to both surfaces of the split that are to be joined. Wait approximately 10 seconds and then hold the split surfaces together for a minimum of two (2) minutes until the seam will hold itself closed. It is **IMPORTANT** that you allow for a full 30 minute total cure time for the fused surface to be completely ready for the next step.



### STEP 4

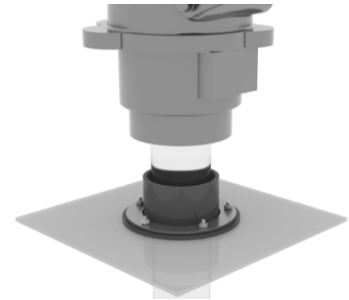
Apply a liberal bead of gasket sealant between the replacement boot flange and the sump floor, then seat the flange onto the studs.



# Icon Repair Instruction for 5 & 6 Bolt Shallow Pan Fittings IRF “\*B\* x Spec” Repair Part Numbers

## STEP 5

Reinstall the metal ring over the existing bolts, and the nuts, and then tighten in a star pattern until evenly and securely flush to the sump floor.



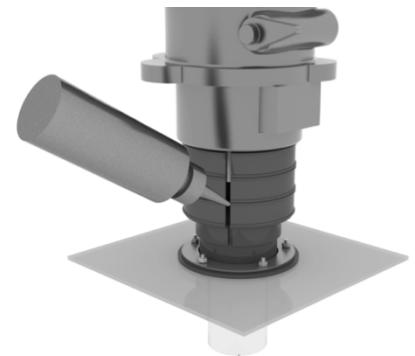
## STEP 6

Apply a liberal coating of FastFuse glue around the upper cuff portion of the flanged boot where the two boots overlap.



## STEP 7

Quickly install the upper portion of the split repair boot around the pipe, and apply a liberal coating of FastFuse glue on both surfaces of the split that are to be joined. You will want to have the band clamps already installed around the fitting and resting at the bottom so that you can quickly put the band clamps in place around the upper portion of the two-piece boot to hold it until fully cured. Follow the same process for glueing as described in Step 3.



## STEP 8

When completely cured, tighten the top band clamp completely. The two bottom clamps should only be tightened enough to hold the split components together while the FastFuse cures. A full cure for the FastFuse is a minimum of 30 minutes. At that point you can finish tightening the remaining two lower band clamps. You are ready for testing immediately after this step.

