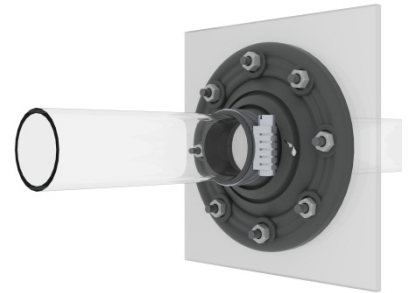


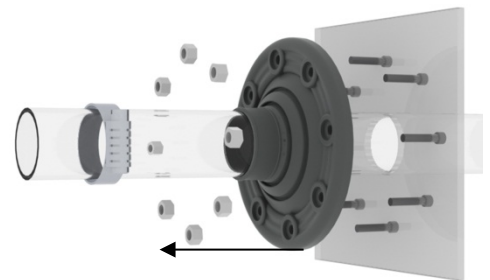
Icon Repair Instruction for Flange Boot Design Fittings

“IRF *B*.” Split Repair Fitting Part Numbers

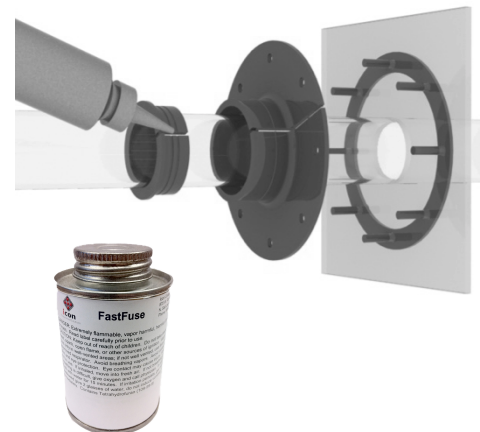
STEP 1 Identify the damaged, leaking fitting and select the proper Icon repair fitting based upon the fitting type, the fitting manufacturer, and the pipe diameter. Icon technical support can assist in the fitting specification.
Please provide pictures and other information to assist in this process.



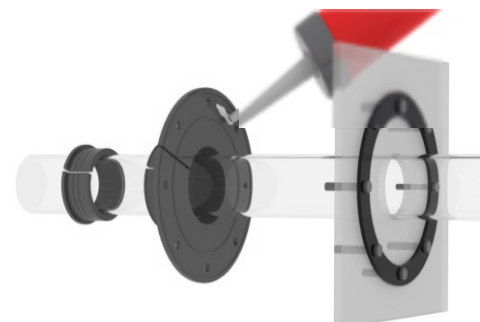
STEP 2 Remove any band clamps from old fitting. Remove any nuts and compression ring from the bolts and store for future use. Remove the old fitting boot, which may need to be cut off. Take care not to damage the pipe or conduit in the process. Remove any previous gasket sealant that may be in the way and clean the surfaces with acetone or isopropyl alcohol to remove any contaminants that would prevent adhesion and an even flush seal by the replacement gasket sealant and split repair fitting.



STEP 3 Assemble the split repair fitting parts over the pipe to determine the sequence of installation based upon the space you have to work with. All split fitting parts other than the black poly ring must be bonded together with FastFuse glue. This is done by first ensuring that the surfaces are clean and dry. Wipe with acetone or isopropyl alcohol. Then apply a liberal amount of FastFuse glue to both split surfaces. Hold the seam together for two (2) minutes without movement until it is bonded sufficiently to let go. It's helpful to use the band clamps to loosely hold the seam together during the additional curing period. The FastFuse glue bond will be fully cured in 30-40 minutes.



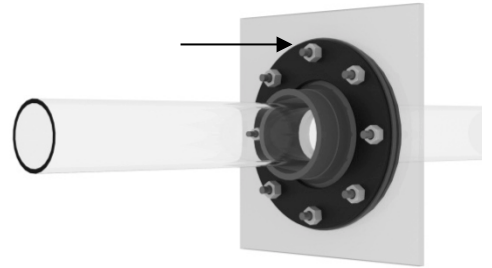
STEP 4 Once all components are bonded and cured completely, you can proceed with the installation. Apply a liberal bead of gasket sealant to the backside of the flange fitting. This will make the seal with the sump wall. Insert the poly compression ring, or the metal ring that was removed previously, over the flange and position it onto the studs and up against the sump wall.



Icon Repair Instruction for Flange Boot Design Fittings “IRF *B*.” Split Repair Fitting Part Numbers

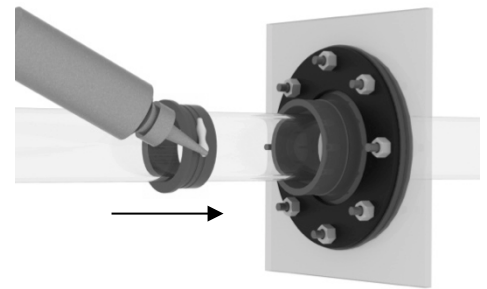
STEP 5

Reinstall nuts and tighten them evenly in a star pattern to secure an even and flush fit by the fitting to the sump wall



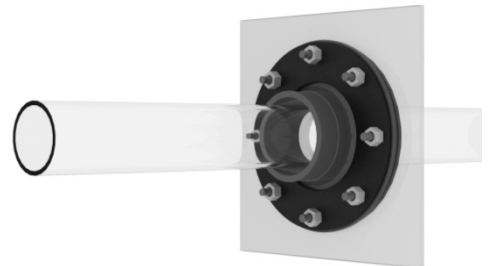
STEP 6

If applicable, apply FastFuse glue around the side of the insert and inside the mouth of the fitting and push the insert into the fitting mouth. Tighten the band clamp securely. You do not need to wait for any cure time on parts that are secured by a band clamp



STEP 7

Clean and “finger” finish the excess gasket sealant around the fitting flange edge, making sure all nuts and clamps are securely and evenly tightened. You are now ready to begin any testing to confirm your successful repair.



NOTE

If you have several fittings in a sump to repair, it is best to rotate the more significant repair steps in a sequence from fitting to fitting rather than try to complete the entire process with each fitting before attempting repair on the next. A rotation procedure will greatly decrease the time involved in a multiple fitting repair scenario.

